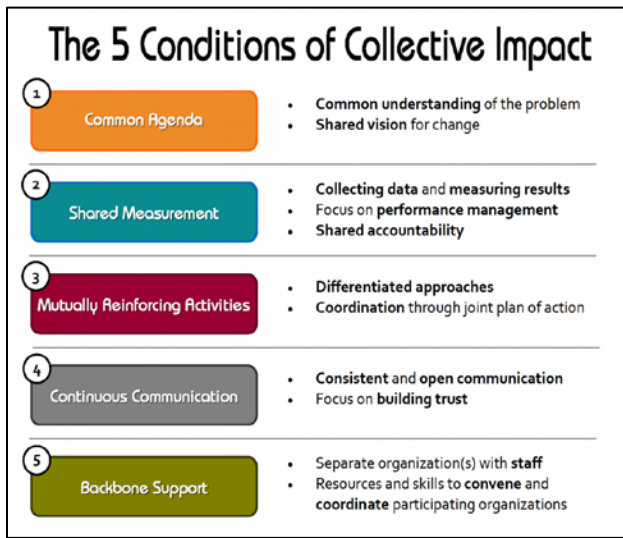


Collective Impact & Backbone Leadership Working Group



Actions from the July 21, 2015 Working Group Meeting

1. **Convene teleconference with Living SJ Backbone** to learn how the Lean 6 Sigma Approach was utilized to narrow 62 priorities to 4 and to identify the specific actions undertaken in relation to the four priority areas. Call scheduled for **Tuesday August 2**.
2. **Communication Strategy:** Need to consider name of initiative, engagement of multi-sectoral partners and the general public. See attached summary of actions that will be undertaken from August – September pending approval of senior leadership.
3. **Determine the number of unique visits to the Collective Impact webpage** following distribution of update #1 to June 9 community stakeholder workshop registrants: **26 unique visits during the month of July**.
4. **Prepare for the September 20 Priority Selection Workshop** by engaging existing housing, mental health, and child/youth health collaboratives in discussions to identify issues/root causes/existing data related to priority areas. **Meetings have been confirmed with Community Partners Addressing Homelessness (CPAH) for August 8, and the Child/Youth and Family Network for August 15.** Meetings with Intersect, and NH regarding mental health pending. Slide show to be delivered at these meetings is attached. Interactive exercises to establish “problem statements”, to identify root causes of the “problem”, and consider metrics have been developed for use with meeting participants.

Next Meeting: Thursday August 25, 2016 from 11:30 am to 1:30 pm